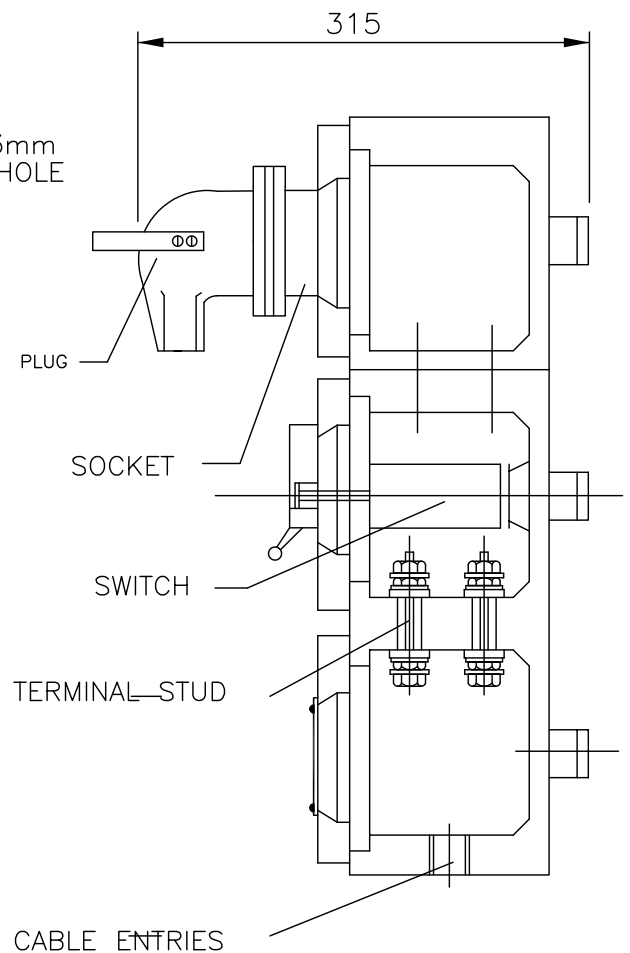


**ELEVATION**



**SIDE VIEW**

**NOTES:-**

- 1 : FLAME PROOF - GROUPS - I, IIA & IIB AS PER IS:2148/1981.
- 2 : WEATHER PROOF - IP55 AS PER IS:2147/1962.
- 3 : MATERIAL - ALUMINIUM ALLOY LM6.
- 4 : EARTHING - 1 No. INTERNAL & 2 Nos. EXTERNAL (M6).
- 5 : GASKET - NEOPRENE
- 6 : FINISH - LIGHT GREY EPOXY SHADE No. 631 OF IS:5 (POWDER COATED).
- 7 : CABLE ENTRYS - 2 Nos. 1 1/4" ET
- 8 : SWITCH - 63 TP/TPN
- 9 : SPIGGOTED COVER IS PROVIDED FOR SOCKET.
- 10 : INTERLOCK ARRANGEMENT IS PROVIDED SUCH AS PLUG CAN NOT BE REMOVED UNLESS SWITCH IN 'OFF' POSITION & SWITCH CANNOT BE 'ON' UNLESS PLUG INSERTED.

**SPECIAL NOTE:-**

WE CAN ASLO OFFER MCB, ELMCB etc, INSTEAD OF ISOLATOR

OVERALL DIMENSION : ±10mm

CUSTOMER		TITLE					
PROJECT		<b>FLP-WP 63A PLUG&amp;SOCKET (4P+E)</b>					
CONSULTANT							
DRAWN	SM	<b>SCG Ex d TECH PVT. LTD., CHENNAI.</b>					
CHECKED	DKK						
APPROVED	GK						
SCALE	NTS	FILE REF. PS/138	CAT.NO. SS/A/138	CMRS CERT No. V/1/1/352 Dt. 07.06.1985.	GA.DRG.No. SCG/OF0000/PS138/0001	REV. 0	DATE 14/11/05