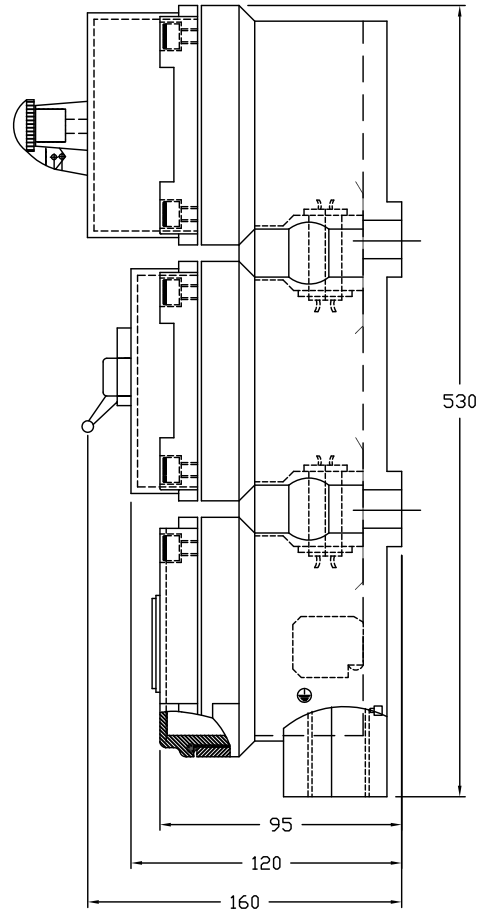


**ELEVATION**



**SIDE VIEW**

**NOTES :**

- 1 : FLAME PROOF GROUPS - I,IIA & IIB AS PER IS:2148
- 2 : DEGREE OF PROTECTION - IP:65 AS PER IS:2147
- 3 : MATERIAL - CAST ALUMINIUM ALLOY LM6
- 4 : EARTHING - 1 No. INTERNAL & 2 Nos. EXTERNAL SCREWS ARE PROVIDED
- 5 : GASKET - NEOPRENE
- 6 : FINISH - LIGHT GREY TO SHADE 631 OF IS:5  
(EPOXY POWDER COATED)
- 7 : PUSH BUTTONS -  
STOP PUSH BUTTON WILL BE OF PADLOCKABLE TYPE  
START PB WILL BE OF SHROUD TYPE - GREEN COLOR
- 8 : TERMINAL BLOCKS - 6 Nos. 2.5 Sq.mm
- 9 : CABLE ENTRY - 3 Nos. 3/4"ET ENTRY

OVERALL DIMENSION : ±10mm

CUSTOMER			TITLE :- <b>FLP-WP DOL STARTER UPTO 10HP WITH ISOLATOR</b>  <b>SCG Ex d TECH PVT. LTD.</b> <b>CHENNAI-600 032</b>				
PROJECT							
CONSULTANT							
DRAWN	SM						
CHECKED	DKK						
APPROVED	GK						
SCALE	NTS	FILE REF. DOL/187	CAT.NO. DOLS/99187	CMRS CERT No. CMRI/TC/P/H846 Dt. 30.06.99	GA.DRG.No. SCG/OF0000/DOL187/0001	REV. 0	DATE 14/11/05